

# Maple Leaf WHEELCHAIR

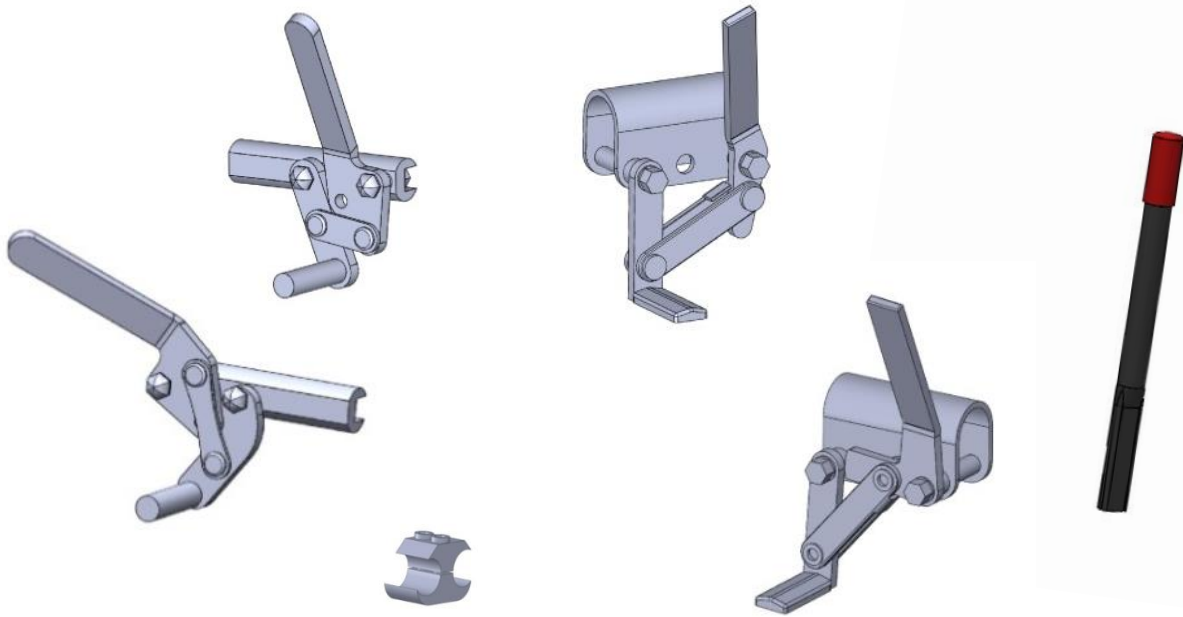


## PARTS CATALOGUE WHEEL LOCK

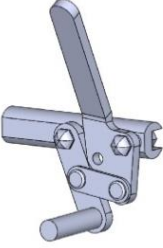



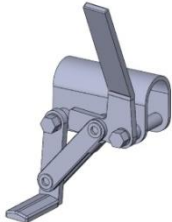
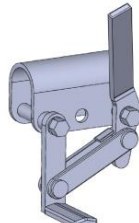


6540 Tomken Road  
Mississauga ON L5T 2E9  
905.564.2250  
905.564.5424  
1.800.362.0873  
[www.mapleleafwheelchair.ca](http://www.mapleleafwheelchair.ca)


# Wheel Lock



Part No.	Part Name	Part Description	Cost	
B02APTR	Aluminum Pull to Lock R  7/8" Tubing	Aluminum-Pull to Lock type wheel lock for Right Hand Side. Sold with 7/8" Clamp [WL010]  (Chair Serial Number needs to be mentioned.)	55/ each	
B02APTL	Aluminum Pull to Lock L  7/8" Tubing	Aluminum-Pull to Lock type wheel lock for Left Hand Side. Sold with 7/8" Clamp [WL010]  (Chair Serial Number needs to be mentioned.)		
B02APTR1	Aluminum Pull to Lock R  1" Tubing	Aluminum-Pull to Lock type wheel lock for Right Hand Side. Sold with 1" Clamp [WL011]  (Chair Serial Number needs to be mentioned.)		
B02APTL1	Aluminum Pull to Lock L  1" Tubing	Aluminum-Pull to Lock type wheel lock for Left Hand Side. Sold with 1" Clamp [WL011]  (Chair Serial Number needs to be mentioned.)		

B05APHTR	Aluminum Push to Lock R  7/8" Tubing	Aluminum-Push to Lock type wheel lock for Right Hand Side. Sold with 7/8" Clamp [WL010]  (Chair Serial Number needs to be mentioned.)	55/ each	 
B05APHTL	Aluminum Push to Lock L  7/8" Tubing	Aluminum-Push to Lock type wheel lock for Left Hand Side. Sold with 7/8" Clamp [WL010]  (Chair Serial Number needs to be mentioned.)		
B05APHTR1	Aluminum Push to Lock R  1" Tubing	Aluminum-Push to Lock type wheel lock for Right Hand Side. Sold with 1" Clamp [WL011]  (Chair Serial Number needs to be mentioned.)		
B05APHTL1	Aluminum Push to Lock L  1" Tubing	Aluminum-Push to Lock wheel lock for Left Hand Side. Sold with 1" Clamp [WL011]  (Chair Serial Number needs to be mentioned.)		
BRX16	Brake Clamp 7/8"	Brake Clamps for Wheelchair Tube having a diameter of 7/8" for Aluminum wheel lock only.  Used in all standard wheelchair models. (Access, NRG+, NRG+ Recline, Swift, NRG+ Gold, EZ Ride and Commode wheelchair models)		
BRX17	Brake Clamp 1"	Brake Clamps for Wheelchair Tube having a diameter of 1" for Aluminum wheel lock only.  Used in all geriatric wheelchair models.		

B01SPTR	Stainless Steel Pull to Lock R	Steel-Pull to Lock type wheel lock for Right Hand Side.  (Chair Serial Number needs to be mentioned.)	55/ each	
B01SPTL	Stainless Steel Pull to Lock L	Steel-Pull to Lock type wheel lock for Left Hand Side.  (Chair Serial Number needs to be mentioned.)		
B04SPHTR	Stainless Steel Push to Lock R	Steel-Push to Lock type wheel lock for Right Hand Side.  (Chair Serial Number needs to be mentioned.)	55/ each	
B04SPHTL	Stainless Steel Push to Lock L	Steel-Push to Lock type wheel lock for Left Hand Side.  (Chair Serial Number needs to be mentioned.)		
BRX9	Brake Extension 9"	Brake extension having a length of 9"	30/ each	
BRX6	Brake Extension 6"	Brake extension having a length of 6"		
BRX4	Brake Extension 4"	Brake extension having a length of 4"		
BRX015C	Brake Extension Caps	Caps for the brake extension; standard for all brake extension sizes.	1/ each	

WL007R	One Hand Brake System R Push to Lock	Aluminum Push to Lock type brake operated using Right hand.	280/ set	
WL007L	One Hand Brake System L Push to Lock	Aluminum Push to Lock type brake operated using Left hand.		
WL008R	One Hand Brake System R Pull to Lock	Aluminum Pull to Lock type brake operated using Right hand.		
WL008L	One Hand Brake System L Pull to Lock	Aluminum Pull to Lock type brake operated using Left hand.		